

# K.C.P.E SEVENTH TRIAL STANDARD EIGHT 2019

**SCIENCE**

Time: 1hr 40mins

**READ THESE INSTRUCTIONS CAREFULLY**

1. You have been given this question booklet and a separate answer sheet. The question booklet contains 50 questions.
2. Do any necessary rough work in this booklet.
3. When you have chosen your answer, mark it on the **ANSWER SHEET**, not in the question booklet.

**HOW TO USE THE ANSWER SHEET**

4. Use an ordinary pencil.
5. Make sure that you have written on the answer sheet:
 

**YOUR INDEX NUMBER**  
**YOUR NAME**  
**NAME OF YOUR SCHOOL**
6. By drawing a **dark line** inside the correct numbered boxes mark your full Index Number (i.e. School Code Number and the three-figure Candidate's Number) in the grid near the top of the answer sheet.
7. Do not make any marks outside the boxes.
8. Keep your answer sheet as clean as possible and do not fold it.
9. For each of the Questions 1 – 50, four answers are given. The answers are lettered A, B, C and D. In each case only **ONE** of the four answers is correct. Choose the correct answer.
10. On the answer sheet the correct answer is to be shown by drawing a **dark line** inside the box in which the letter you have chosen is written.

**Example**

**In the Question Booklet:**

- 14.** The process by which plants lose water to the atmosphere is called
- A. capillarity
  - B. diffusion
  - C. transpiration
  - D. evaporation

The correct answer is C (transpiration)

**On the answer sheet:**

A  B  C  D    
  14 A  B  C  D    
  24 A  B  C  D    
  34 A  B  C  D    
  44 A  B  C  D

In the second set, the box with the letter C printed in it is marked.

11. Your **dark line** **MUST** be within the box.
12. For each question **ONLY ONE** box is to be marked in each set of four boxes.

**This question paper consists of 7 printed pages.**

**Candidates should check the question paper to ensure that all the pages are printed as indicated and no questions are missing**

1. Which one of the following pair of drugs are **not** prohibited in Kenya?

- A. Bhang and cocaine
- B. Tobacco and alcohol
- C. Miraa and mandrax
- D. Alcohol and bhang

2. Which one of the following is **not** advisable when dealing with chemicals at home?

- A. Storing chemicals at the reach of children
- B. Labelling chemical containers.
- C. Spraying chemical towards the direction of wind
- D. Wearing protective clothes when handling chemicals

3. The reason why some plants shed their leaves during the dry season is to

- A. reduce the rate of making food.
- B. make them float in water.
- C. reduce the rate of transpiration.
- D. withstand water current

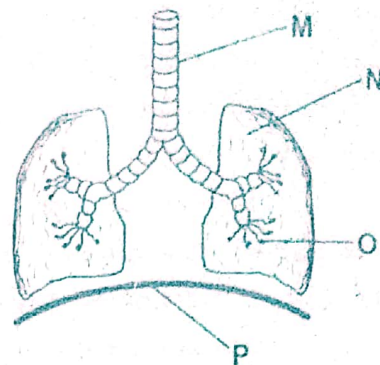
4. Which one of the following consists of group of animals that have internal fertilisation?

- A. Whale, tilapia, frog.
- B. Snake, bat, ostrich.
- C. Eagle, newt, tortoise
- D. Crocodile, shark, dolphin.

5. Which one of the following parts of the circulatory system is **correctly** matched to its function?

Part	Function
A. Heart	- purify the blood
B. Veins	- carry blood away from the heart
C. Platelets	- fight germs
D. Plasma	- carry carbondioxide

6. The diagram below represents a breathing system



Which one of the following is **not** a function of part labelled **M**?

- A. Warming of air.
- B. Trapping dust.
- C. Absorption of air.
- D. Cleaning the air.

7. Which one of the following crop pests is **correctly** matched to the part of the plant it damages

Pest	Part damaged
A. Cutworm	- leaves
B. Aphids	- tubers
C. Weevils	- leaves
D. Stalkborer	- stem

8. Which one of the following groups of plants consists of **non flowering** plants?

- A. Algae, bean, banana.
- B. Sisal, grass, mushroom.
- C. Fir, moss, bracket tree
- D. Toadstool, blackjack, maize

9. In the solar system, Mars is found between

- A. Uranus and Neptune
- B. Earth and Jupiter
- C. Mercury and Venus
- D. Jupiter and Saturn



10. Which one of the statements below describes hard water?

- A. Lather easily.
- B. Save washing detergents
- C. Has mineral salts
- D. Good for laundry work

11. Which diseases are **mainly** controlled by proper use of toilets and latrines?

- A. Bilharzia and cholera
- B. Typhoid and anaemia
- C. Cholera and tuberculosis
- D. Malaria and bilharzia

12. Which one of the following pair consists of levers **only**?

- A. Ladder and wheelbarrow
- B. Staircase and road winding up a hill.
- C. Clawhammer and ladder
- D. Crowbar and spade

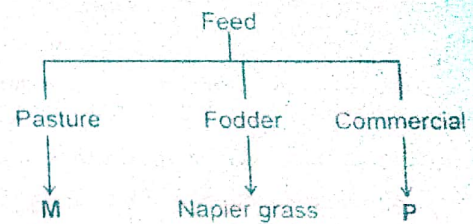
13. The following are methods of preserving food.

- (i) Smoking
- (ii) Use of low temperatures
- (iii) Canning
- (iv) Use of honey
- (v) Drying

Which two methods preserve food by coating?

- A. iv and v.
- B. i and iii.
- C. i and iv.
- D. ii, iii and v.

14. The chart below represents a simple classification of animal feeds.



Which feeds below represent **M** and **P** respectively?

- A. Napier grass and bran
- B. Lucern and maize germ
- C. Pollard and glycine
- D. Salt lick and napier grass

15. Which one of the following animal parasite **cannot** be controlled through deworming and strip grazing?

- A. Liverfluke
- B. Tsetse fly
- C. Tapeworm
- D. Hookworm

16. Which one of the following food materials is **likely** to cause food poisoning? Eating

- A. sugarcane.
- B. green sprouting potatoes.
- C. irish potatoes.
- D. food before the expiry date.

17. The following are properties of different types of soil.

- (i) shiny particles
- (ii) make shortest ribbons
- (iii) high water retention
- (iv) large air spaces



Which two properties are for the soil that is good for construction?

- A. ii and iv
- B. i and iii
- C. i and iv
- D. ii and iii

18. Which one of the following activities **mainly** pollute soil?

- A. Suffocation of small animals in the soil.
- B. Disposal of human waste in water sources.
- C. Aerosol spays from factories.
- D. Improper disposal of inorganic wastes in the soil.

19. Implantation in human beings take place when

- A. a female sex cell is released from the ovary.
- B. dilation occurs in the cervix.
- C. zygote attach itself in the uterine wall.
- D. a male sex cell fuses with female sex cell.

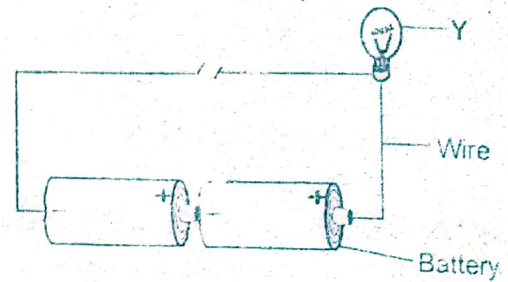
20. The following are steps followed when making a beam balance

- (i) Balance the arm
- (ii) Suspend the tins from the arm
- (iii) Fix the arm onto the stand
- (iv) Make the stand, the arm and the base

Which is the **correct** order to be followed from the first to the last?

- A. (iv), (i), (iii), (ii)
- B. (iii), (i), (ii), (iv)
- C. (i), (iii), (iv), (iv)
- D. (iv), (iii), (i), (ii)

21. What is the energy transformation at point Y in the set up below?



- A. Heat → light
- B. Electrical → light
- C. Light → heat
- D. Chemical → electrical

22. A ray of light from the source to shiny surface is **likely** to be

- A. dispersed
- B. reflected
- C. refracted
- D. absorbed

23. Which one of the following consists of fibre crops **only**?

- A. Simsim, avocado and maize
- B. Cotton, beans and yams
- C. Sisal, flax and cotton
- D. Coffee, tea and cocoa

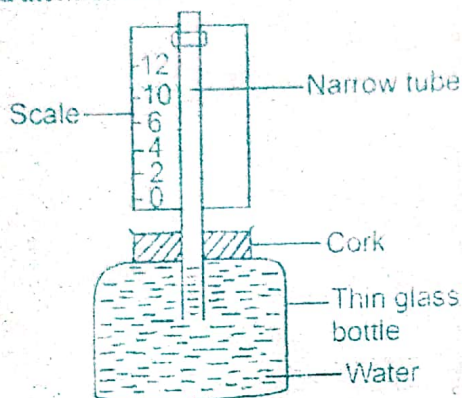
24. Which one of the following activities cause of soil erosion is influenced by human beings?

- A. Slope of the land.
- B. Vegetation cover.
- C. Cultivating near river banks.
- D. Ploughing across the slope.



25. Tiredness upon small exercise and short of breathe are signs associated with
- marasmus
  - rickets
  - malaria
  - anaemia

26. The diagram below represent an improvised liquid thermometer



Which one of the following materials should be included to make it more effective?

- Plastic bottle
  - Ink
  - Stand
  - Polythene bag
27. Which one of the following is **true** about the solar system?
- Sun rotates around the planets.
  - Moon produces light.
  - Planets rotate round the sun.
  - Neptune has the shortest orbit
28. The **most** effective way of controlling the spread of livestock internal worms is by:
- proper deworming
  - regular spraying
  - draining stagnant water
  - observing hygiene

29. The force that opposes motion is measured using a
- beam balance
  - see saw
  - weighing scale
  - spring balance

30. Which one of the following is a definite characteristic of milk and water vapour?
- Volume and mass
  - Shape and size
  - Mass only
  - Volume and weight

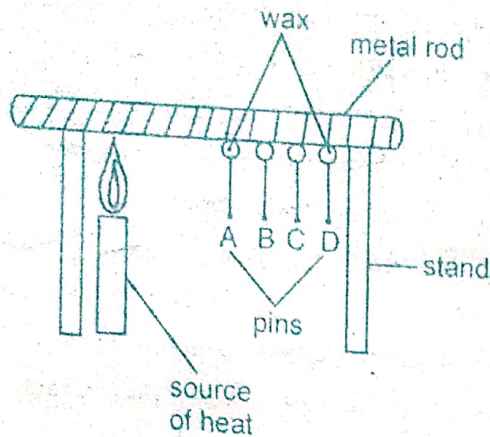
31. Which one of the following is **not** an advantage of breast milk?
- It is wholesome.
  - Always free from disease causing germs.
  - It is convenient.
  - It gives natural immunity

32. In an improvised jiko, the clay lining prevent heat loss through
- convection.
  - conduction
  - radiation
  - melting

33. Which one of the following is **not** classified as a straight fertiliser?
- Ammonium fertilisers
  - Phosphatic fertilisers
  - Nitrogenous fertilisers
  - Potassic fertilisers



34. Study the diagram below and answer the question that follows



- Pin A fell first due to
- conduction only
  - radiation only
  - convection and conduction
  - radiation and conduction
35. Which one of the following consists **only** of pairs of animals that hide in the shell for protection?
- Snail and turtle
  - Spider and slugs
  - Tortoise and chameleon
  - Centipede and ticks
36. Which one of the following consists of sinkers **only**?
- Needles and chalk
  - Candles and nails
  - Feathers and leaves
  - Stones and rubbers
37. A flower which has feathery stigma and produces more pollen grains is also **likely** to have
- coloured petal
  - have nectar
  - sticky stigma
  - small size

38. Which one of the following is a soft sound

- Siren
- Thunderstorm
- Noise
- Whisper

39. In which one of the following process is oxygen used?

- Making of food by plants
- Germination of seeds
- Fire extinguishing
- Preservation of soft drinks

40. Which one of the following material work the same way as skylight?

- White paper
- Glass
- Kerosene
- Oiled paper

41. In which one of the following activities is water used in industries?

- Sport fishing
- Cleaning farm equipments
- Cleaning raw materials
- Boat racing

42. When balancing on a see saw, the heavier person should be

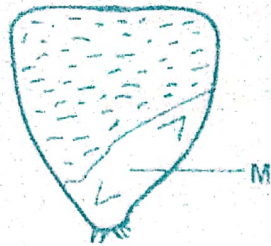
- far from the pivot.
- sit at the same distance with the lighter person.
- near the pivot.
- stand on the pivot

43. The **best** weather for weeding is

- windy season
- wet season
- calm season
- dry season



44. The diagram below represent a maize seed



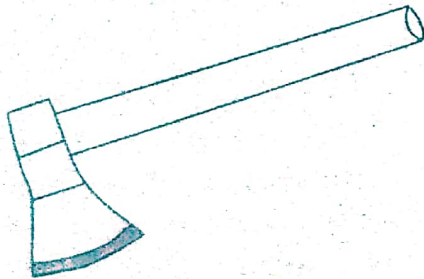
Part marked M is referred to as

- A. endosperm
- B. micropyle
- C. cotyledon
- D. radicle

45. Which one of the following activities will add organic matter in the soil?

- A. Burning vegetation cover.
- B. Dumping vegetation waste in the soil.
- C. Use of inorganic fertilizer
- D. Clearing of bushes

46. The **best** way of maintaining the simple tool drawn below is

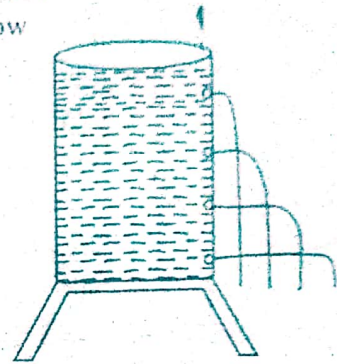


- A. oiling
- B. painting
- C. greasing
- D. sharpening

47. Which one of the following practices has led to great spread of HIV/AIDS among the adolescents?

- A. Blood transfusion
- B. Sharing of piercing objects
- C. Sexual intercourse
- D. Being unfaithful

48. Standard 4 pupils set up an experiment as shown below



To increase the speed of the jets, they should have

- A. used a longer tin.
- B. made the hole wider.
- C. raised the tin higher.
- D. closed the tin with a lid.

49. Which one of the following pair of processes are as result of decrease and increase in temperature **respectively**?

- A. Evaporation and melting
- B. Melting and expansion
- C. Condensation and contraction
- D. Contraction and evaporation

50. In a certain investigation on soil, pupils felt a sample of soil with their fingers. This activity was done to investigate

- A. presence of mineral particles in the soil
- B. soil texture
- C. soil capillarity
- D. soil drainage